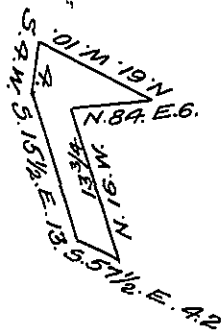


York County Shore.



Lancaster County Shore

A Draught of Lower Turkey Island situate in the river Susquehanna in Drumore township Lancaster County Opposite land in possession of Cunningham Scott, on the West side and lands of Thomas Neel on the East side and opposite the Bear Island near the York County shore Containing Sixty Perches Strict Measure Surveyed in pursuance of a Warrant dated the fourth day of May A.D. 1815 granted to William Kilgore

p^c Jacob Hibshman D.S.

To Jacob Spangler Esq. }
 Surveyor General }

I have examined the above Survey and approve of it being accepted in the Surveyor Generals Office this 12th day of October A.D. 1835.

To Jacob Spangler Esq. }
 Surveyor General Penna }

James Calwell D.S.

IN TESTIMONY that the above is a copy of the original remaining on file in the Department of Internal Affairs of Pennsylvania, made conformably to an Act of Assembly approved the 16th day of February 1833, I have hereunto set my hand and caused the Seal of said Department to be affixed at Harrisburg, this twenty first day of January 1908.

Henry Houck

Secretary of Internal Affairs.